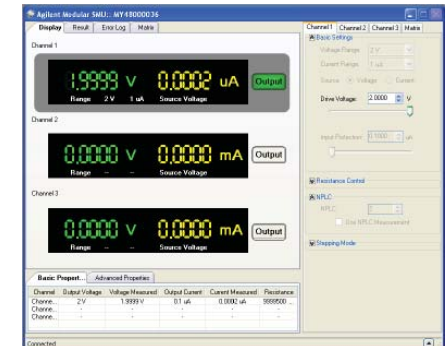
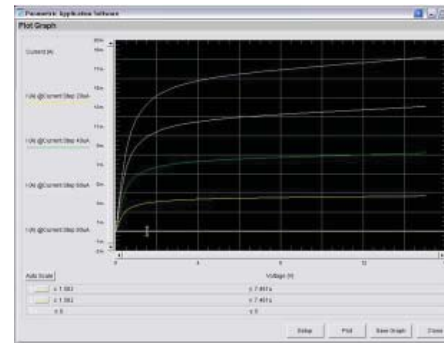
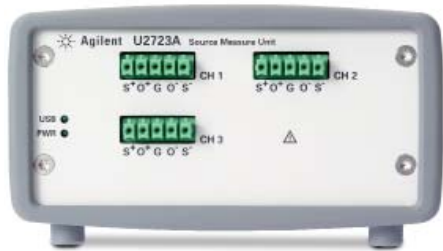
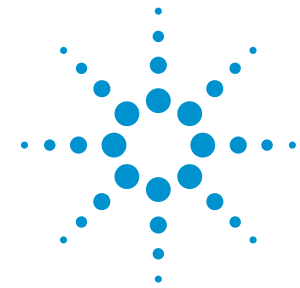


Parametric Measurement Solution

Measure and analyze quickly and efficiently with all your essential parametric measurement tools at your fingertips

The Parametric Measurement Solution consists of the Agilent U2722A/U2723A USB modular source measurement unit and the Agilent Parametric Measurement Manager Pro software, providing you a basic yet complete parametric measurement test solution that analyzes the performance of components such as diodes and transistors without the need for prior programming experience. The optional Agilent U2941A parametric test fixture can further increase your parametric test efficiency and usability.



U2722A/U2723A USB modular source measure unit

- Three-channel unit with four-quadrant operation (± 20 V, ± 120 mA).
- High measurement sensitivity of 100 pA with 16-bit resolution.
- 0.1% basic accuracy.
- Low current measurement capability down to nA levels.
- Wide range of Application Development Environments compatibility.
- IV Curve application support and faster rise/fall time (for U2723A).

U2941A parametric test fixture

- Closed lid minimizes ESD to protect sensitive circuits and components.
- Up to 3 source/measure channels supported.
- Different socket modules to match a wide variety of pin configurations.
- Assembly Teflon plate for low-current measurements.
- Agilent Parametric Measurement Manager software bundled with the test fixture.

U2942A Parametric Measurement Manager Pro (PMM Pro)

- Intuitive GUI that is easy to configure and simplifies testing.
- User-defined test profiles, and predefined test profiles for diode, bipolar junction transistors and field effect transistors.
- Automated test sequencing for parametric analysis.
- Parametric measurements plotted, displayed and logged in an IV curve.
- Build-in math functions such as addition, subtraction and division.

Agilent Measurement Manager (AMM)

- Friendly interface for modular instruments.
- Command logger to allow the capture of configuration commands.
- Code converter function converts logged commands into snippets of VEE, VB, C++ and C# code.
- Data logging and export feature to CSV, HTML and text only format files that can be printed.
- Self-test and self-calibration.
- Bundled with the U2722A/U2723A hardware at no additional cost.



Quick Fact Sheet

U2722A/U2723A USB Modular Source Measure Unit

Product specifications

Model	U2722A/U2723A
Number of outputs	3
Output ratings (at 0 °C to 50 °C)	
Voltage	-20 V to 20 V
Current	-120 mA to 120 mA
Performance specification	
U2722A/U2723A	Basic accuracy
Voltage programming	0.05% + 10 mV
Current programming	0.075% + 75 nA
Voltage readback	0.05% + 10 mV
Current readback	0.075% + 75 nA

Ordering information

Model	Description	MSRP
Parametric measurement solution ¹		
U2722P	U2722A USB modular source measure unit and U2942A PMM Pro bundle	\$ 2,359
U2723P	U2723A USB modular source measure unit and U2942A PMM Pro bundle	\$ 3,783
USB modular source measure unit		
U2722A	USB modular source measure unit	\$ 2,257
U2723A	USB modular source measure unit with embedded test scripts	\$ 3,681
Parametric Measurement Manager Pro		
U2942A	Parametric Measurement Manager Pro	\$ 306
Parametric test fixture		
U2941A	Parametric test fixture	\$ 1,499

1. The Parametric Measurement Solution bundle is only available in Europe and Asia (excluding Japan).

System requirements

PMM Pro software

Hardware requirements

- Microsoft® Windows® XP SP3 or higher, Microsoft Windows 7 (Professional, Ultimate, Enterprise), Microsoft Windows Vista® SP1 (Business, Ultimate, Enterprise) or higher.
- 450 MHz Pentium® II processor or higher required; 1 GHz required for Microsoft Windows 7 and Microsoft Windows Vista® SP1.
- At least 1 GB available disk space.
- Super VGA (800 x 600) display or higher, 256 colors or more.

Software requirements

- Agilent IO Libraries Suit 15.0 or higher.
- Agilent VEE Pro 9.0 or higher (Runtime version).
- Microsoft.NET Framework version 1.1 and 2.0.

Recommended service options

Additional two years of Return-to-Agilent warranty
Additional two years of Return-to-Agilent calibrations
For more information go to www.agilent.com/find/removealldoubt

